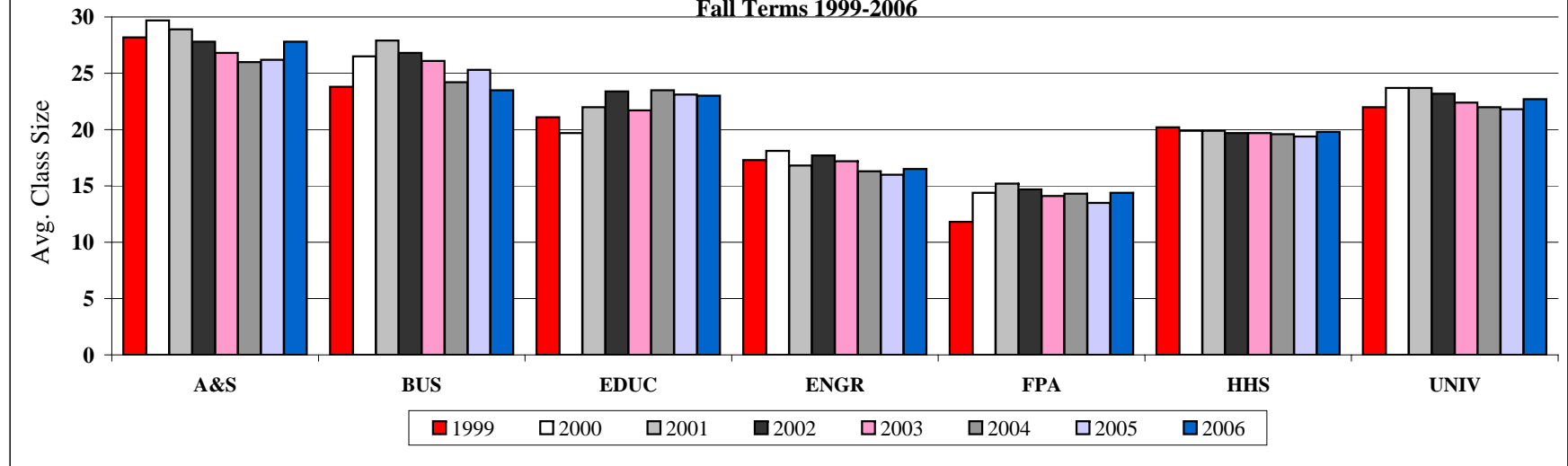
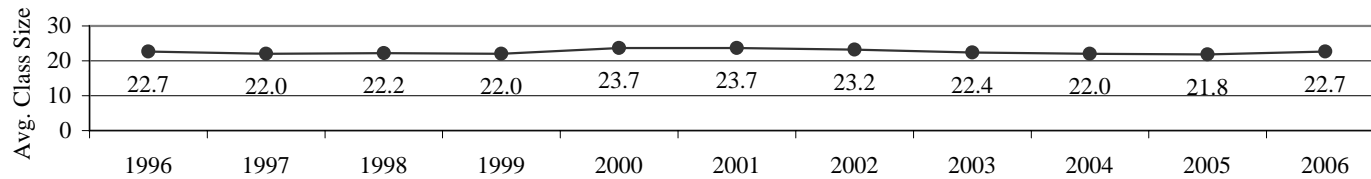


**Youngstown State University  
Preliminary 14th Day Enrollment  
Undergraduate Average Class Size by College  
Fall Terms 1999-2006**



	<u>A&amp;S</u>	<u>BUS</u>	<u>EDUC</u>	<u>ENGR</u>	<u>FPA</u>	<u>HHS</u>	<u>UNIV</u>
<i>1999</i>	28.2	23.8	21.1	17.3	11.8	20.2	22.0
<i>2000</i>	29.7	26.5	19.7	18.1	14.4	19.9	23.7
<i>2001</i>	28.9	27.9	22.0	16.8	15.2	19.9	23.7
<i>2002</i>	27.8	26.8	23.4	17.7	14.7	19.7	23.2
<i>2003</i>	26.8	26.1	21.7	17.2	14.1	19.7	22.4
<i>2004</i>	26.0	24.2	23.5	16.3	14.3	19.6	22.0
<i>2005</i>	26.2	25.3	23.1	16.0	13.5	19.4	21.8
<i>2006</i>	27.8	23.5	23.0	16.5	14.4	19.8	22.7

**Total University Undergraduate Average Class Size - Fall Terms 1996-2006**



Note: Includes all course section types: Lecture, Discussion, Seminar, Recitation, as well as Lab, Clinical, Practicum, Field Experience, Studio, Independent Studies, etc.; Excludes conference courses only.  
Prepared by the Office of Institutional Research

SR41-clszecollu06  
Rnaples-4/25/07