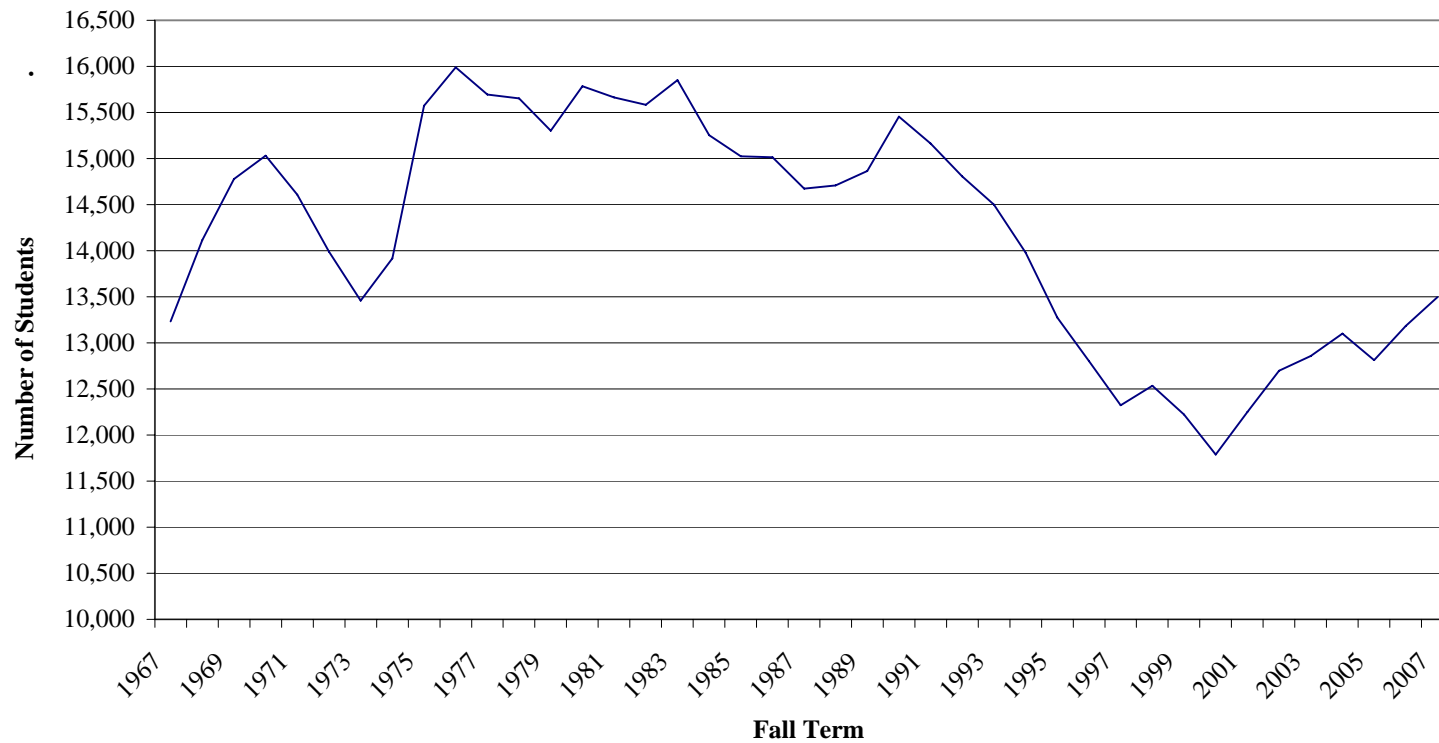


Youngstown State University

Preliminary Fall Term Enrollment

Since Becoming State-Assisted in 1967



Fall Term	Number Enrolled	Fall Term	Number Enrolled	Fall Term	Number Enrolled	Fall Term	Number Enrolled
1967	13,232	1978	15,652	1989	14,864	2000	11,787
1968	14,115	1979	15,303	1990	15,454	2001	12,250
1969	14,777	1980	15,784	1991	15,164	2002	12,698
1970	15,030	1981	15,664	1992	14,806	2003	12,858
1971	14,606	1982	15,584	1993	14,501	2004	13,101
1972	13,988	1983	15,849	1994	13,979	2005	12,812
1973	13,458	1984	15,254	1995	13,273	2006	13,183
1974	13,917	1985	15,026	1996	12,801	2007	13,497
1975	15,573	1986	15,015	1997	12,324		
1976	15,898	1987	14,675	1998	12,533		
1977	15,696	1988	14,710	1999	12,222		

agents Basic Data Series and YSU's 14th Day Preliminary Enrollment Summaries